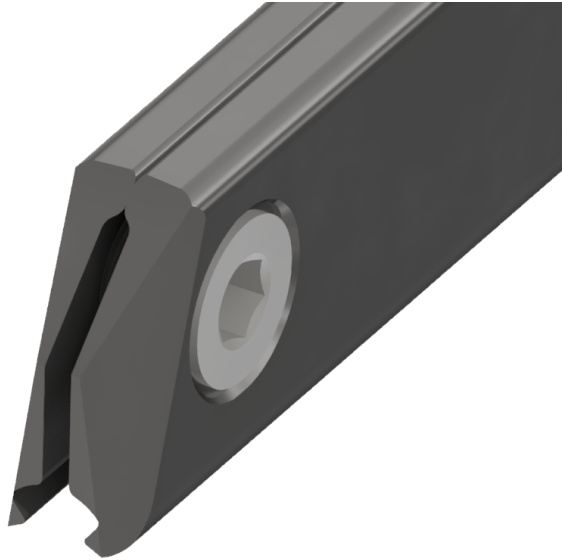


# Curve rail type 1, for deviation angle 5.5°-7.5°, with thread 5/8", for grooved contact wire 100-120 mm<sup>2</sup>

Item number B0412-01



## Dimensions

C: 5/8"

B: 52 mm

L: 1200 mm

## Material and weight

Weight: 4.000 kg

Material: STL HDG

## Comments

- The indication of the angles apply for grooved contact wires up to 107 mm<sup>2</sup>