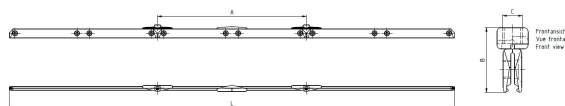
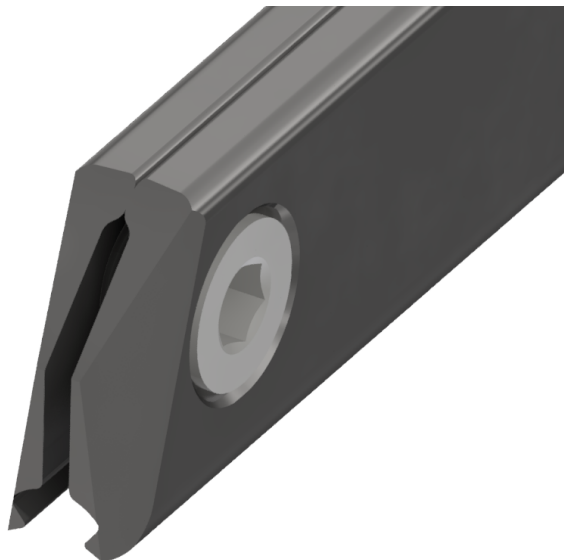


Curve rail type 2, for deviation angle 8°-10°, with thread 5/8", for grooved contact wire 100-120 mm²

Item number B0412-02



Dimensions

A: 600 mm

C: 5/8"

B: 52 mm

L: 1800 mm

Material and weight

Weight: 6.100 kg

Material: STL HDG

Comments

- The indication of the angles apply for grooved contact wires up to 107 mm²