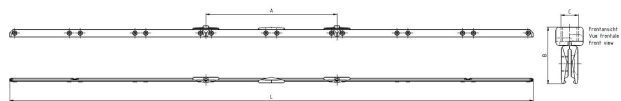
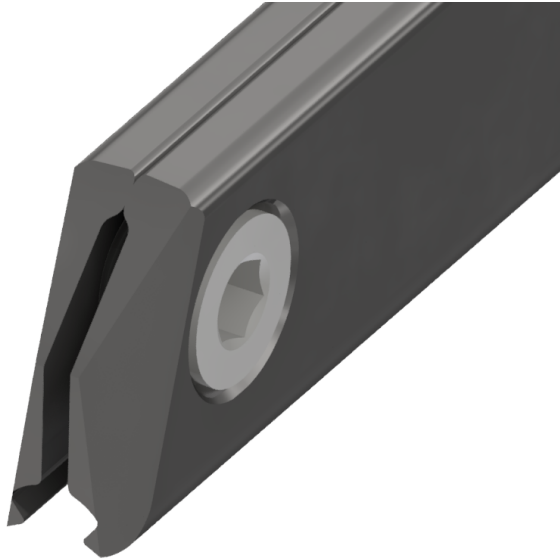


# Curve rail type 3, for deviation angle 10.5°-14°, with thread 5/8", for grooved contact wire 100-120 mm<sup>2</sup>

Item number B0412-03



## Dimensions

A: 600 mm  
C: 5/8"  
B: 52 mm  
L: 2400 mm

## Material and weight

Weight: 7.900 kg  
Material: STL HDG

## Comments

- The indication of the angles apply for grooved contact wires up to 107 mm<sup>2</sup>