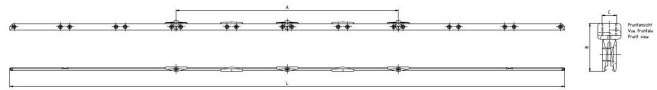
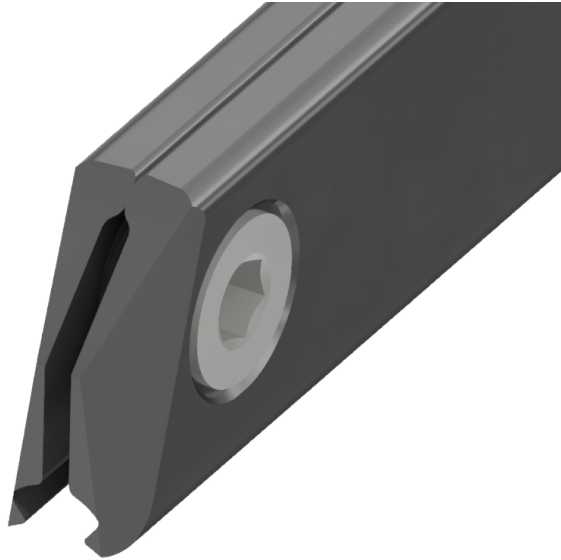


Curve rail type 4, for deviation angle 14.5°-30°, with thread 5/8", for grooved contact wire 100-120 mm²

Item number B0412-04



Dimensions

L: 3000 mm

A: 600 mm

C: 5/8"

B: 52 mm

Material and weight

Weight: 10.000 kg

Material: STL HDG

Comments

- The indication of the angles apply for grooved contact wires up to 107 mm²