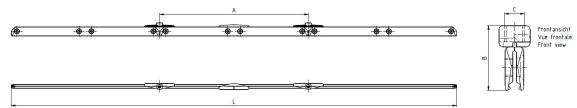
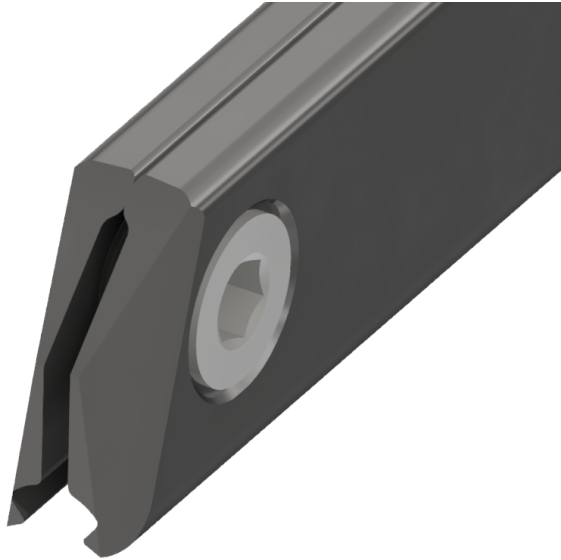


Curve rail type 2, for deviation angle 8°-10°, with thread M16, for grooved contact wire 100-120 mm²

Item number B0412-07



Dimensions

A: 600 mm
C: M16
B: 52 mm
L: 1800 mm

Material and weight

Weight: 6.100 kg
Material: STL HDG

Comments

- The indication of the angles apply for grooved contact wires up to 107 mm²