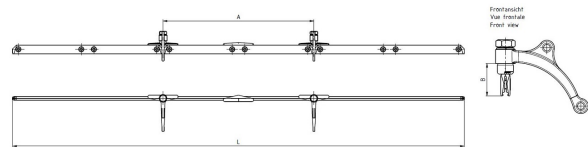
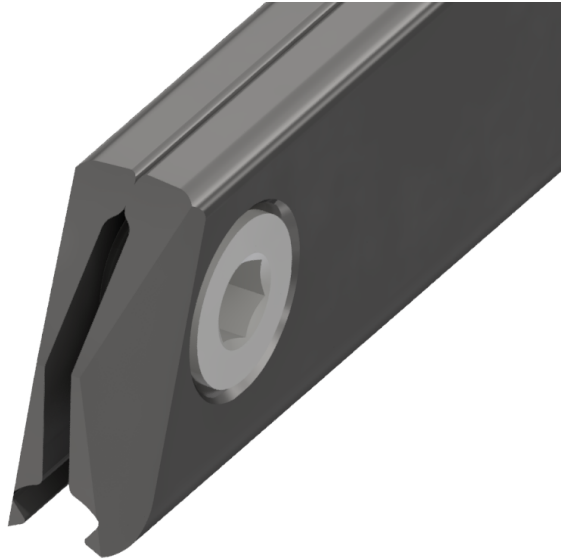


# Curve rail type 2, for deviation angle 8°-10°, with thread 5/8", for grooved contact wire 80 mm<sup>2</sup>

Item number B0412-12



## Dimensions

A: 600 mm  
C: 5/8"  
B: 52 mm  
L: 1800 mm

## Material and weight

Weight: 6.100 kg  
Material: STL HDG

## Comments

- The indication of the angles apply for grooved contact wires up to 107 mm<sup>2</sup>