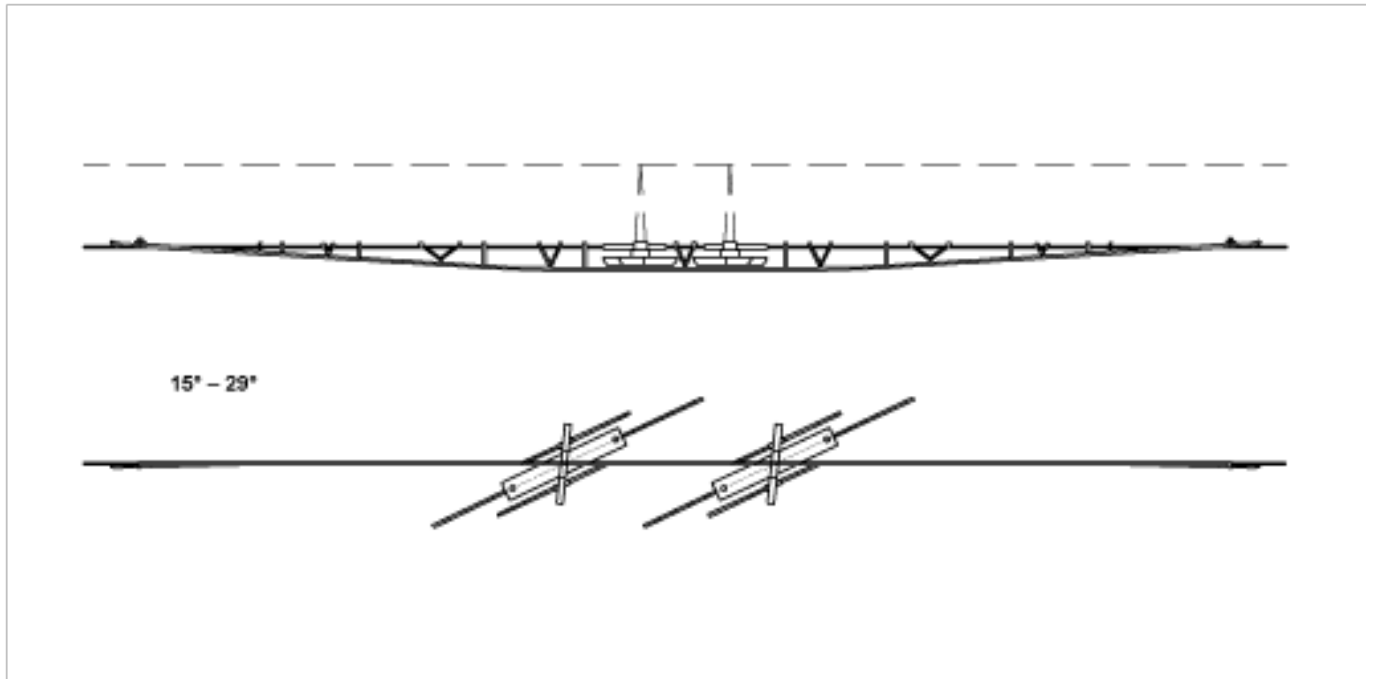


Crossing ETB-TW, bridging, 15°-29°, with jumper, flat profile/tube, TW contact line not auto-tensioned

Item number 100787



Specification

Voltage: max. 1000 V DC

Comments

- For grooved contact wire 80-120 mm²

- Without supporting network and suspension
- Execution for 2 TW grooved contact wires on request
- Detailed installation plans can be requested for each delivery of this assembly