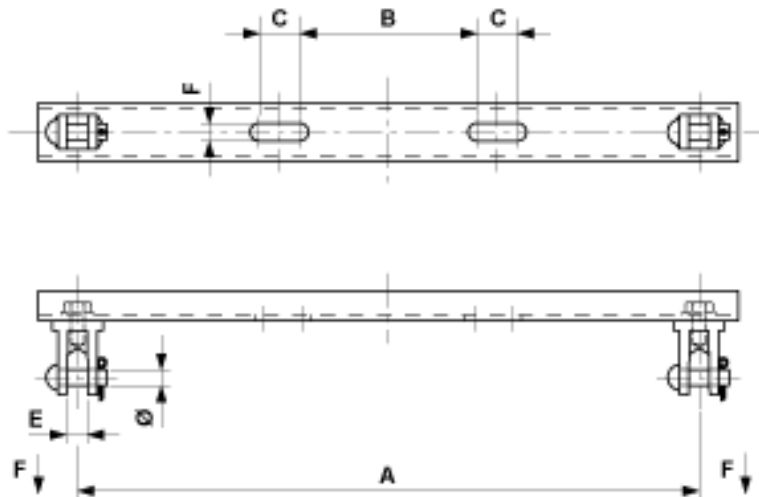


Bracket straight with clevis, to wide flange poles

Item number C0663-03



Dimensions

B: 180 mm

Ø: 16 mm

F: 18 mm

A: 630 mm

C: 41 mm

E: 21 mm

Material and weight

Material: STL HDG

Loads

Breaking load F on traction: 6.5 kN

Comments

- Attachment to poles HEB 180-240
- U-bolt Ø= 16 mm Part no. E0717-...(1 piece)(to be ordered separately)