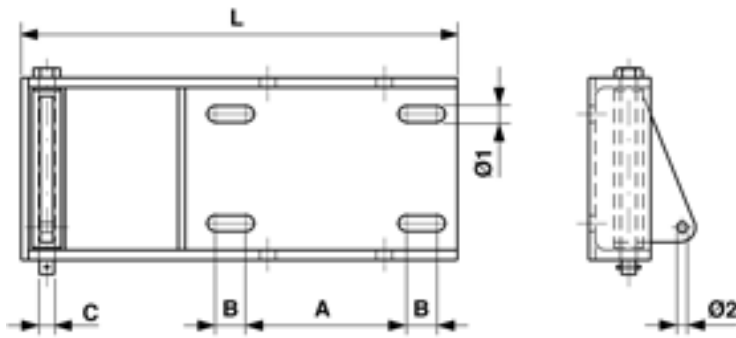


Bracket with off-set swivel for twin cast iron weights

Item number C1523-04



Dimensions

A: 220 mm
Ø2: 18 mm
Ø1: 22 mm
B: 42 mm
C: 14 mm
L: 720 mm

Material and weight

Material: STL HDG

Loads

Breaking load: 65 kN

Comments

- For counterweight to anchor beams
- Attachment to wide flange poles HEB 200-260
- U-bolt Ø= 20 mm Part no. E1484-... (2 pcs.) (to be ordered separately)