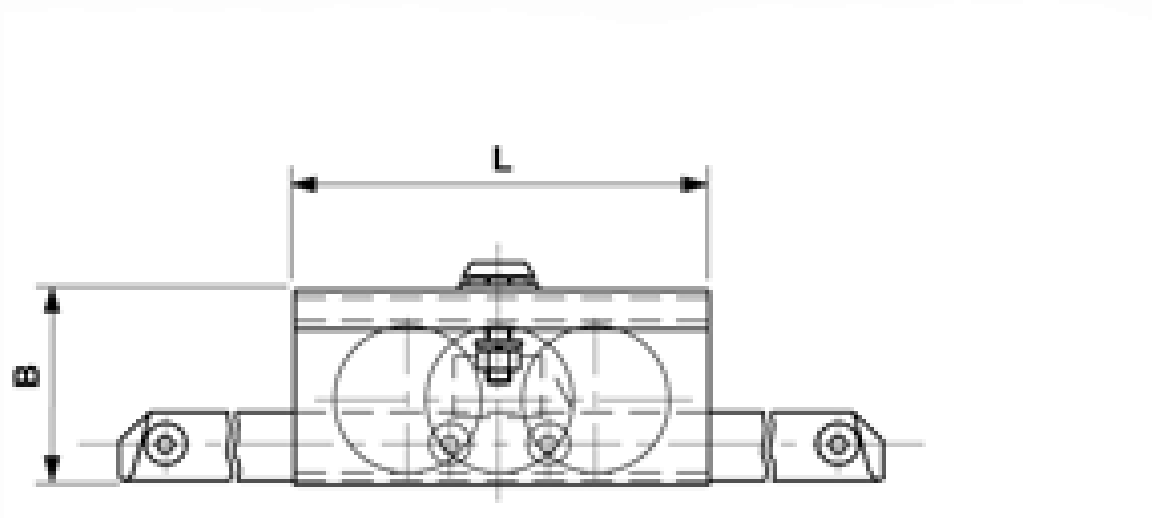


# Movable support L = 210 mm, with reduced installation height, for contact wire gradient 3.0%, contact wire holder L = 1200 mm

Item number C1806-03



## Dimensions

A: 98.5 mm  
B: 93.5 mm  
C: 200 mm  
L: 210 mm

## Material and weight

Material: Box profile GRP, pulley synth., contact wire holder STL HDG

## Specification

Operating voltage: max. 1500 V DC

## Comments

- Rolling distance: For all types 100 mm
- For grooved contact wire 80-120 mm<sup>2</sup>
- Attachment to Unistrut channel type 3 B
- Attachment material is included