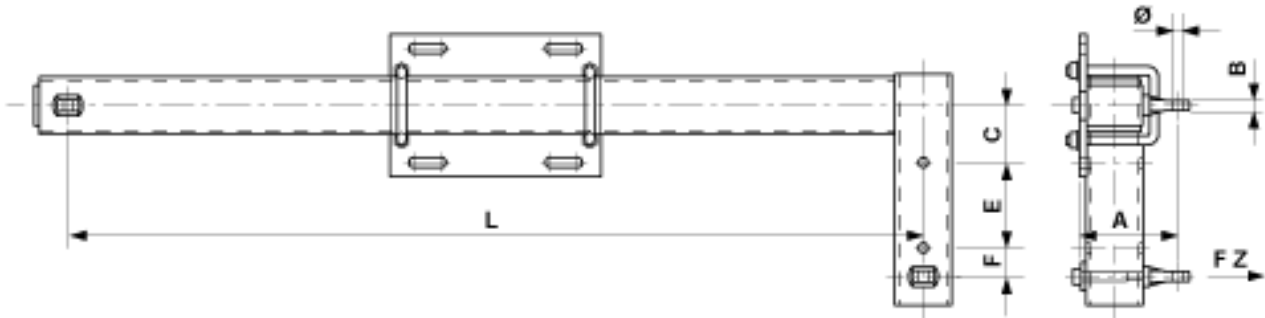


# Bracket inclined complete for tension section, with tongue, L = 900 mm

Item number C1866-01



## Dimensions

B: 18 mm  
Ø: 17 mm  
F: 50 mm  
L: 900 mm  
C: 100 mm  
A: 172 mm  
E: 150 mm

## Material and weight

Weight: 25.000 kg  
Material: STL HDG/Al

## Loads

Breaking load F on traction: 38 kN

## Comments

- Attachment to poles HEB 180-260
- U-bolts Ø= 16 mm, part no. E0888-.. (2 pcs.)(to be ordered separately)