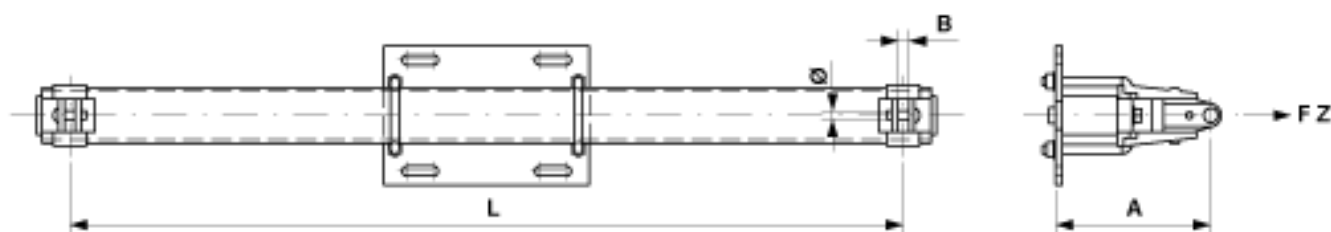


Bracket straight with hinge complete for tension section, with clevis, L = 900 mm

Item number C1870-01



Dimensions

L: 900 mm
A: 280 mm
B: 20 mm
Ø: 16 mm

Material and weight

Material: STL HDG/Al

Weight: 22.700 kg

Loads

Breaking load F on traction: 38 kN

Comments

- Attachment to poles HEB 180-260
- U-bolts Ø= 16 mm, part no. E0888-.. (2 pcs.)(to be ordered separately)