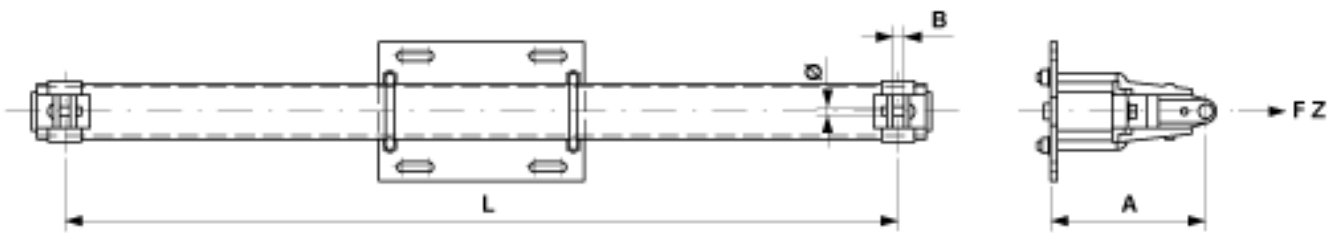


# Bracket straight with hinge complete for tension section, with clevis, L = 1500 mm

Item number C1870-03



## Dimensions

A: 280 mm  
L: 1500 mm  
B: 20 mm  
Ø: 16 mm

## Material and weight

Material: STL HDG/Al

Weight: 33.000 kg

## Loads

Breaking load F on traction: 38 kN

## Comments

- Attachment to poles HEB 180-260
- U-bolts Ø= 16 mm, part no. E0888-.. (2 pcs.)(to be ordered separately)