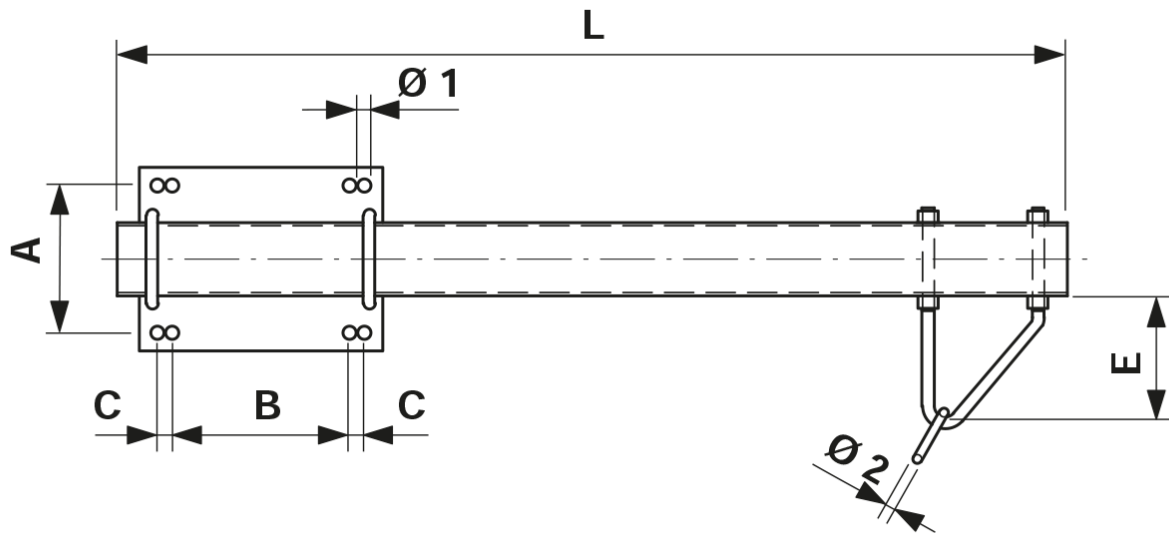


Cranked stand-off bracket for wide flange pole, sliding, straight L= 1250 mm for suspension on one side

Item number C2036-03



Dimensions

A: 170 mm
B: 202 mm
C: 20 mm
Ø1: 18 mm
L: 1250 mm
Ø2: 12 mm
E: 165 mm

Material and weight

Material: STL HDG

Comments

- Attachment to poles HEB 180-260C2036-01 and -03 to poles HEB 180-220C2036-02 and -04 to poles HEB 240-260
- U-bolt $\varnothing = 16$ mm Part no. E0888-... (2 pieces) (to be ordered separately)