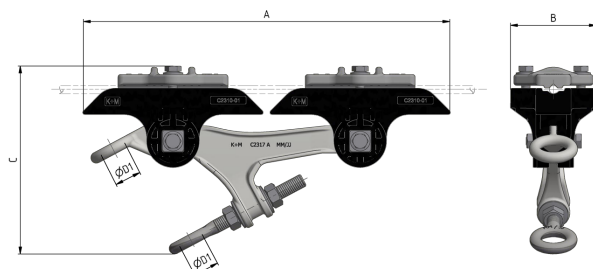


# Line insulator to steel cable KUSYS type 2 with double suspension eye

Item number C2316-01



## Dimensions

A: 334 mm  
B: 78 mm  
C: 171 mm  
ØD1: 24 mm

## Material and weight

Material: Kst / INOX / Alu  
Weight: 2.0 kg

## Loads

Slipping load: 18 kN  
Tightening torque for bolts and hex-nuts M8: 17 Nm

## Applicable standards

DIN EN 50119  
DIN EN 50124-1  
DIN EN 50151

CEI / IEC 60060-1

## Function

Insulator body for fastening to cross-spans, in medium to narrow bends. Continuously adjustable double suspension eye allowing the attachment of all type curve rail

## Specification

Operating voltage: max. 1500 V DC  
Cable diameter: 7.0 - 9.5 mm

## Comments

The application in overhead contact lines requires a wide insulation of the support structure to the support bases.

Clamping is possible on the following cables: steel hot-dip galvanised and steel/copper. Clamps for other cable diameters on request. The suspension can be mounted to pipes or ceilings by exchanging the clamp.