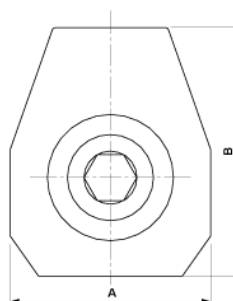


Contact wire clamp ETB for grooved contact wire 100-120 mm²

Item number D0134-01



Dimensions

A: 35 mm
B: 43.3 mm

Material and weight

Weight: 0.100 kg
Material: CuAl

Specification

Max. Tightening torque M14: 40Nm

Comments

- For grooved contact wire 80 till 120 mm²
(Other contact wire sections on request)