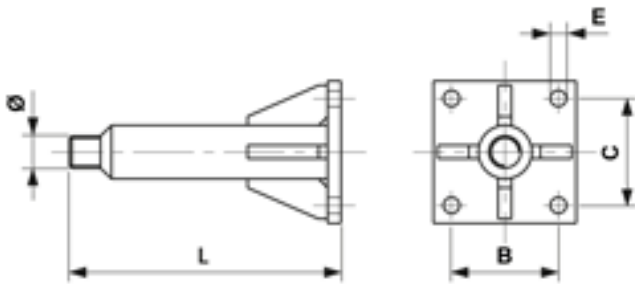


# Stand-off anchor for a removable eye, M36, L= 237 mm

Item number D1929-02



## Dimensions

B: 120 mm

Ø: M36

C: 120 mm

E: 18 mm

L: 237 mm

## Material and weight

Material: SST

## Loads

Recommended load: max. 15 kN

## Comments

- To be used on buildings with external insulation and curtain wall with far away distance
- Is manufactured only on request
- Application recommendations on request