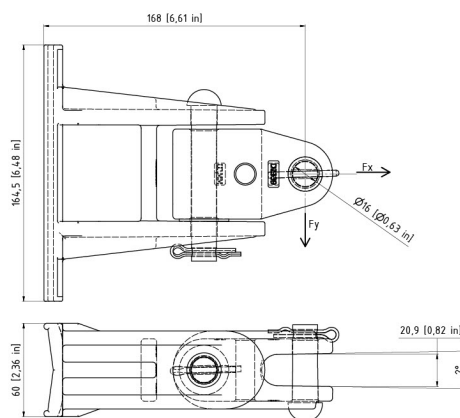


Hinge with clevis fork vertical, complete, to round pole

Item number D2361-01



Loads

Axial Tension

Average breaking load	F_x	60 kN* / 13488 LBF
Maximale design load	$MDL = F_x$	60 kN* / 13488 LBF
Working load limit	$WLL = MDL/S$	20 kN / 4496 LBF
Safety factor	S	3

*Max. force of tensile testing mashine

Transversal tension

Average breaking load	F_y	21.67 kN / 4891.5 LBF
Maximum design load	$MDL = 0.9 \cdot F_y$	19.6 kN / 4401.9 LBF
Work load limit	$WLL = MDL/S$	6.5 kN / 1468.3 LBF

Safety factor	S	3
---------------	---	---

Material and weight

Material: Al/SST

Weight: 1.420 kg

Comments

- Attachment to round poles $D = > 150$ mm
- Pole clamps with band to be ordered separately
- The attachment material to bracket (straight or inclined) must be ordered separately