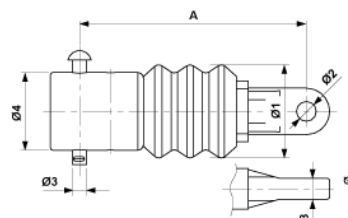


Pipe-end insulator with tongue complete, composite, to pipe G2" and 2" Schedule 40

Item number D2372-02



Dimensions

B: 18 mm
Ø2: 17 mm
Ø3: 12 mm
Ø1: 80 mm
Ø4: 51.2 mm
A: 195 mm

Material and weight

Weight: 1.275 kg

Loads

Breaking load: 30 kN

Specification

Minimum creeping distance: 92 mm for insulator
Operating voltage: max. 3.000 kV

Comments

- Connection parts in Al
- Pin and cotter pin SST
- Other insulators on request