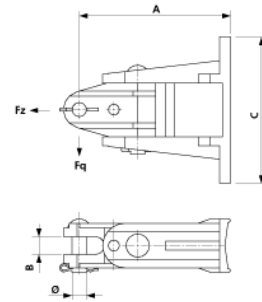
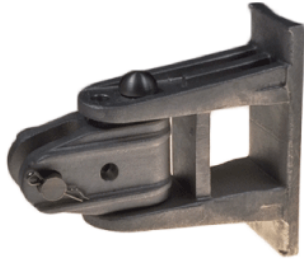


Hinge with clevis fork vertical, complete, to brackets

Item number D2469-01



Dimensions

A: 168 mm
C: 164.5 mm
B: 20 mm
 \varnothing : 16 mm

Material and weight

Material: Al/SST
Weight: 1.410 kg

Loads

Breaking load F across: 14 kN

Breaking moment: with installation locking device 950 Nm

Breaking load F on traction: 38 kN

Comments

- Attachment to round poles $D = > 150$ mm
- Pole clamps with band to be ordered separately
- The attachment material to bracket (straight or inclined) must be ordered separately