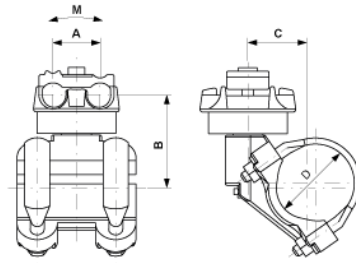


Messenger cable suspension non insulated, rotatable, reinforced, to pipe 2", cable Ø max. 21 mm

Item number D2560-01



Dimensions

A: 49 mm

B: 93.5 mm

C: 61.8 mm

Material and weight

Material: Al/SST

Loads

Breaking moment M: 1900 Nm

Comments

- The installation side of the messenger cable has to be selected so that the lateral force cause by the curve pull act in direction of the cap screw
- For cable diameter $\varnothing = 10-16$ mm and 21 mm
- Use for other cable diameter on request