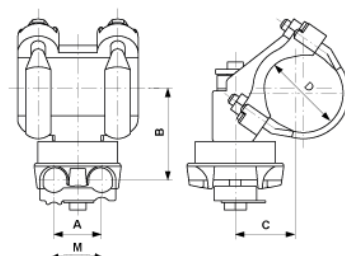


Messenger cable suspension non insulated, rotatable, inverted, to pipe D = 70 mm, cable Ø max. 21 mm

Item number D2618-03



Dimensions

B: 90 mm

A: 49 mm

C: 59 mm

Material and weight

Material: Al/SST

Loads

Breaking moment M: 1500 Nm

Comments

- The installation side of the messenger cable has to be selected so that the lateral force cause by the curve pull act in direction of the cap screw
- For cable diameter $\varnothing = 10-16$ mm and 21 mm
- Use for other cable diameter on request