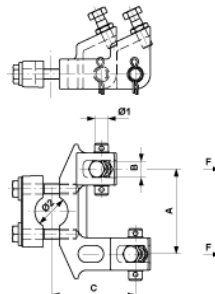
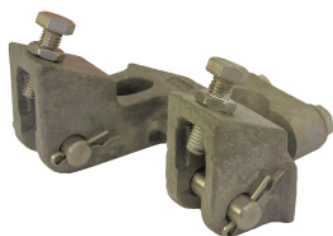


Pipe attachment double with lift limiter, complete, to pipe $\varnothing = 38$ mm, for 2 steady arms

Item number D2708-01



Dimensions

A: 100 mm
C: 98.5 mm
E: 40 mm
B: 20 mm
 $\varnothing 2$: 38 mm
 $\varnothing 1$: 16 mm

Material and weight

Material: Al/SST
Weight: 1.285 kg

Loads

Breaking load F: 15 kN per attachment