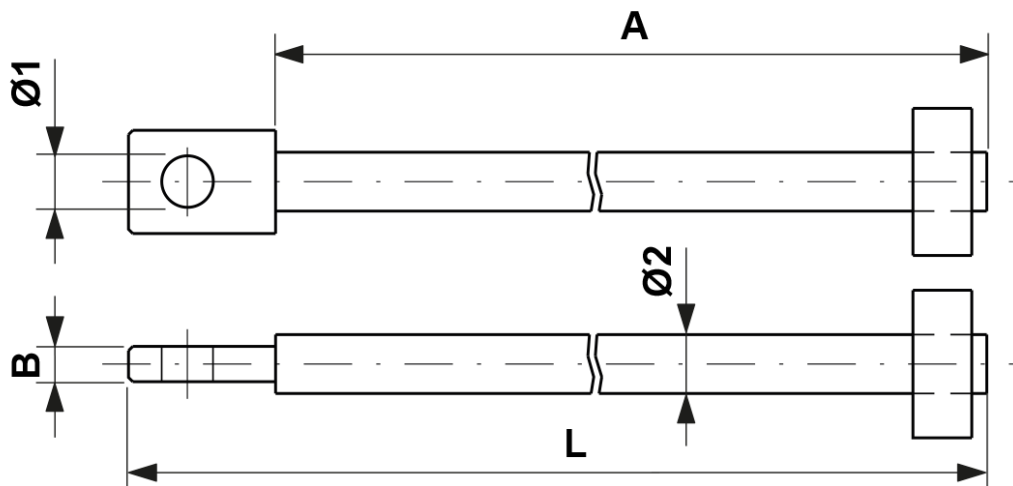


Support rod for cast iron or concrete weights, L = 1810 mm for max. 9 concrete resp. 13 cast iron weights

Item number E0235-01



Dimensions

B: 12 mm
 $\varnothing 2$: 20 mm
A: 1760 mm
 $\varnothing 1$: 17.5 mm

L: 1810 mm

Material and weight

Weight: 4.800 kg
Material: STL HDG