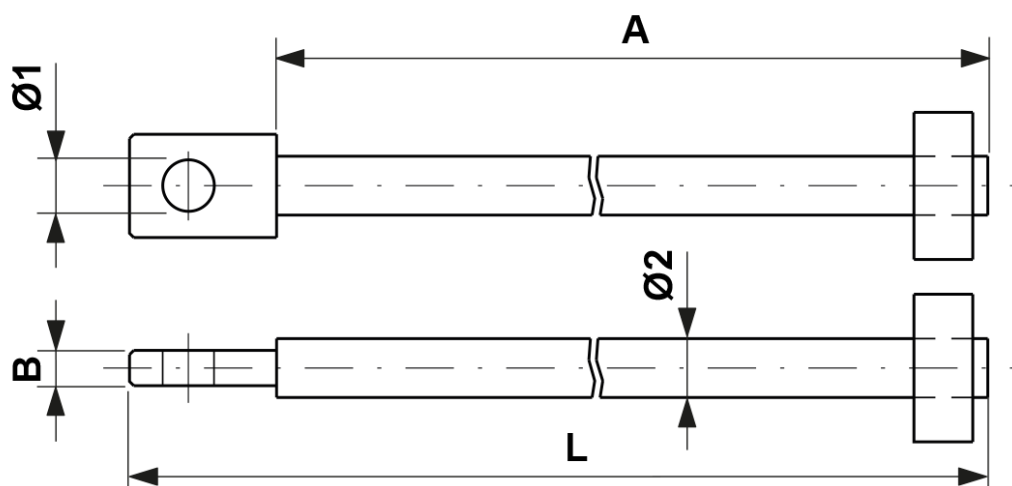


# Support rod for cast iron or concrete weights, L = 2310 mm for max. 12 concrete resp. 17 cast iron weights

Item number E0235-02



## Dimensions

Ø2: 20 mm  
Ø1: 17.5 mm  
A: 2260 mm  
L: 2310 mm

B: 12 mm

## Material and weight

Weight: 5.900 kg  
Material: STL HDG