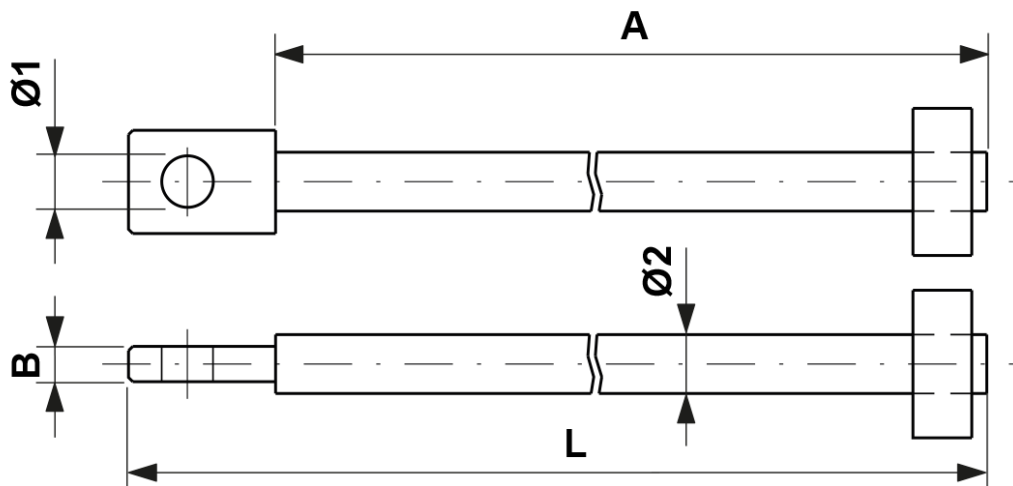


Support rod for cast iron or concrete weights, L = 2810 mm for max. 15 concrete resp. 20 cast iron weights

Item number E0235-03



Dimensions

B: 12 mm
 $\varnothing 2$: 20 mm
 $\varnothing 1$: 17.5 mm
A: 2760 mm

L: 2810 mm

Material and weight

Weight: 7.300 kg
Material: STL HDG