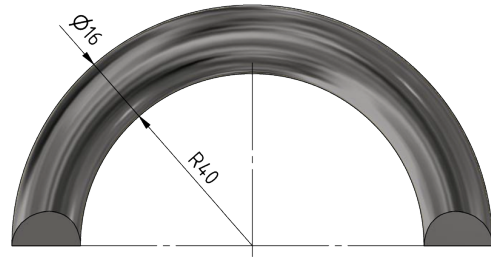
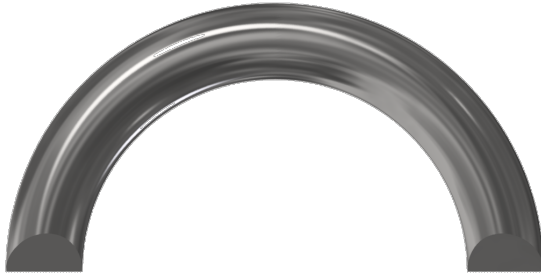


Eye for welding, $\varnothing = 16$ mm

Item number E1113-01



Dimensions

R: 40 mm

\varnothing : 16 mm

Material and weight

Weight: 0.230 kg

Material: ST raw

Loads

Recommended load: with top welding max. 12 kN

Comments

- To be used on steel constructions, steel pillars
data and indications