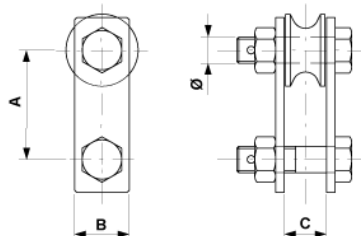
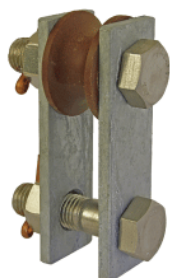


# Strap double with insulating roller

Item number E1543-01



## Dimensions

B: 50 mm

Ø: M24

A: 100 mm

C: 38 mm

## Material and weight

Weight: 2.000 kg

Material: STL HDG

## Loads

Breaking load: 140 kN

## Specification

Breakdown voltage: 23 kV/mm

Creep resistance: (KC) 100

## Comments

- Roller insulated in synthetic material