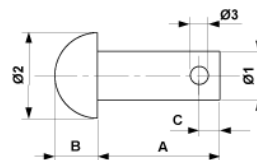


Pin, 16 x 45

Item number E3200-09



Dimensions

C: 5 mm
 $\varnothing 1$: 16 mm
A: 45 mm
 $\varnothing 3$: 6 mm
B: 10.000 mm
 $\varnothing 2$: 26 mm

Material and weight

Material: STL HDG

Comments

- The split pin have to be ordered separately
- Additional executions on request