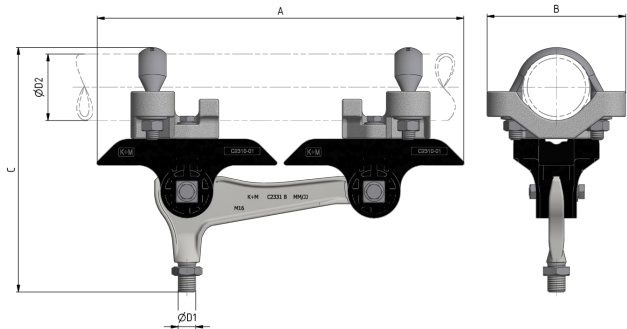
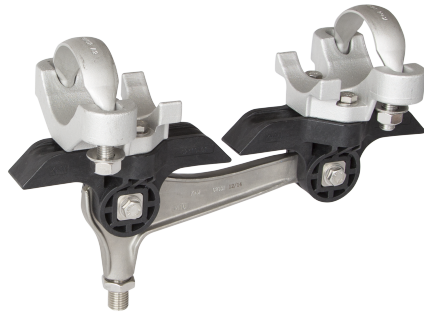


Line insulator KUSYS2 complete pull-off lever arm suspension threaded bolt M16 rigid, to pipe 2.5"

Item number C2382-03



Dimensions

A: 334 mm

B: 126 mm

C: 240 mm

ØD1: M16

ØD2: 2.5" (76.1 mm)

Material and weight

Material: Kst / INOX / Alu

Weight: 2.7 kg

Loads

Breaking load horizontal: 7.5 kN

Tightening torque for bolts and hex-nuts M8: 17 Nm

Tightening torque for bolts M12: 40 Nm

Applicable standards

DIN EN 50119

DIN EN 50124-1

DIN EN 50151

CEI / IEC 60060-1

Function

Insulator body for fastening to pipes, in medium to narrow bends. Rigid threaded bolt suspension allowing the attachment of various railway, tramway and trolley bus components.

Specifications

Operating voltage: max. 1500 V DC

Comments

The application in overhead contact lines requires a wide insulation of the support structure to the support bases.

Optional: Exchanging the u-bolt allows mounting to pipes Ø45 - 80mm. The suspension can be mounted to cross-spans or ceilings by exchanging the clamp.