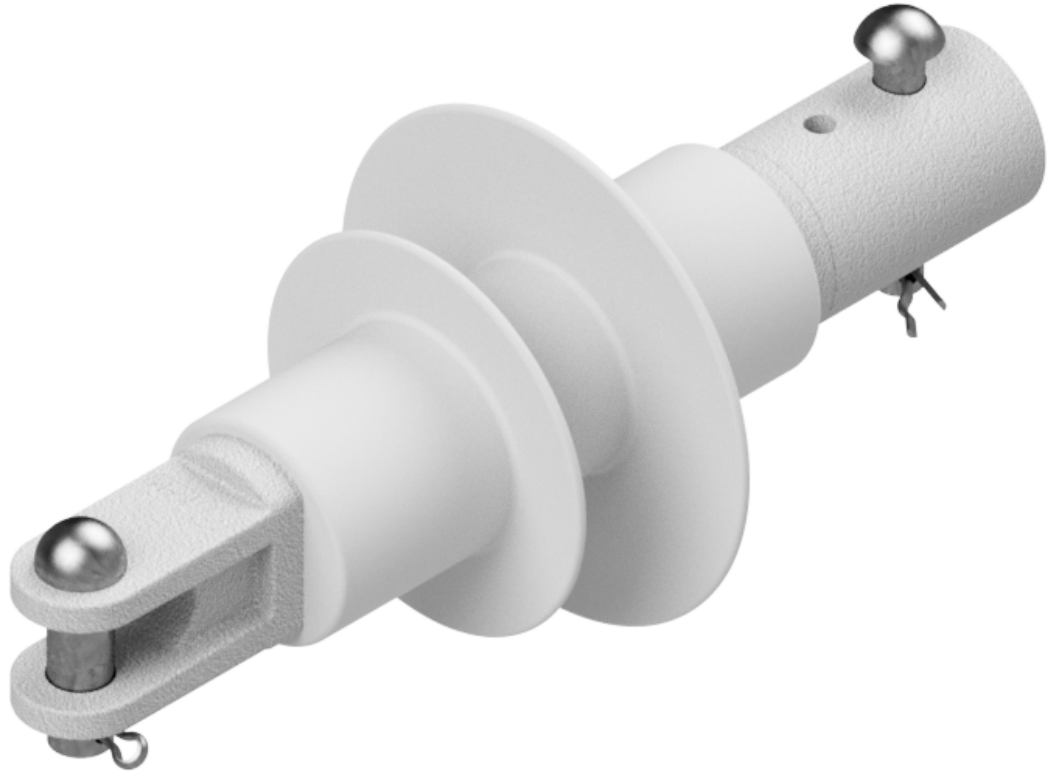


# Insulator 3kV / Clevis - Pipe 2" Sch80 / 90°

Item number C2499-05



## Applicable standards

EN 50124-1, IEC 61952, IEC 62217

## Specification

System voltage (Um): 3 kV

Power-frequency voltage (50 Hz), wet: 20 kV

Lightning impulse voltage 1,2/50: 60 kV

Minimal creepage distance: 254 mm

Nominal load / tensile (STL): 50 kN

Recommended operating load / tensile: 20 kN

Nominal cantilever load / bending (SCL): 13 kN

Valid operating load / bending (MDCL): 5.2 kN