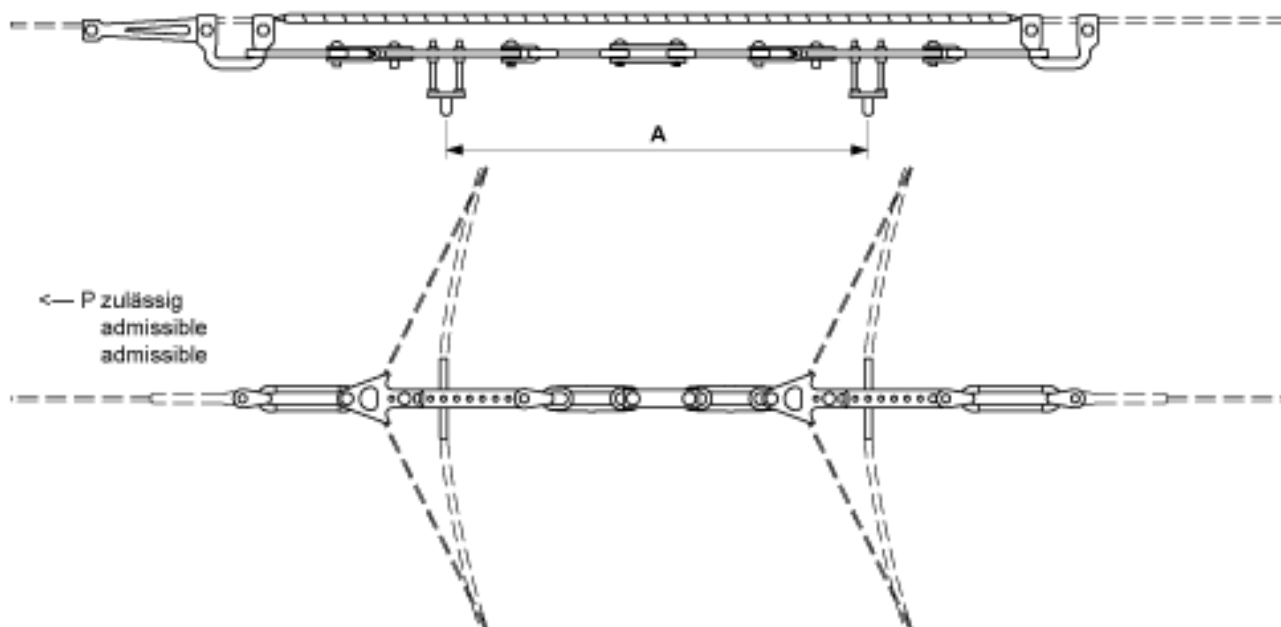


Curve bow ETB adjustable with loop insulator, for oval copper tube, to cross-span steel/steel-copper cable 35 mm², A = 762 mm

Item number 102041



Loads

P permissible: max. 13 kN (breaking load 42.5 kN)

Specification

Operating voltage: max. 1500 V DC

Comments

- for deviation angle 10° - 30°