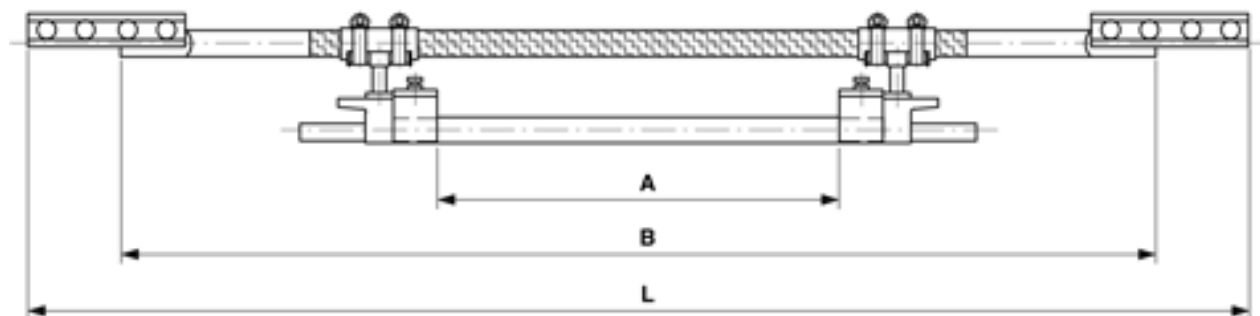


Section insulator ETB 1200 V within copper tube, simple, for 1 grooved contact wire 100-120 mm²

Item number 103103



Dimensions

B: 946 mm
L: 1116 mm
A: 368 mm

Loads

Breaking load: 80 kN
Nominal working tensile load: 15 kN

Specification

Operating voltage: 1200 V DC
Creepage distance: 368 mm