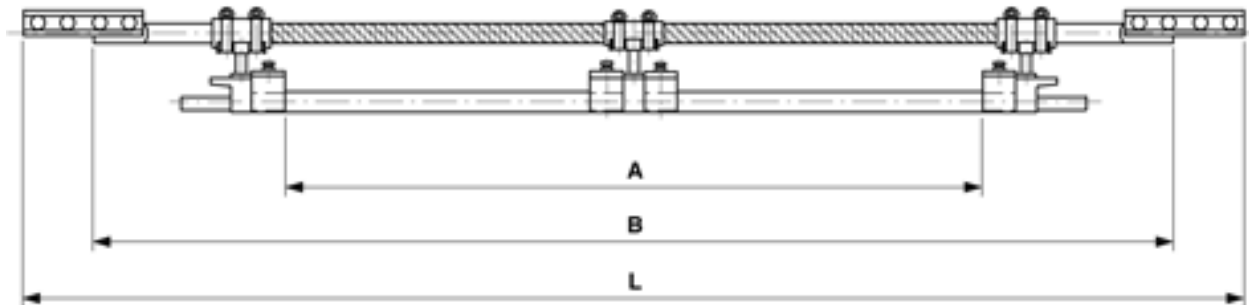


# Section insulator ETB 750 V within copper tube, double, for 1 grooved contact wire 100-120 mm<sup>2</sup>

Item number 103104



## Dimensions

A: 841 mm  
B: 1301 mm  
L: 1471 mm

## Loads

Breaking load: 80 kN  
Nominal working tensile load: 15 kN

## Specification

Creepage distance: 841 mm  
Operating voltage: 1200 V DC