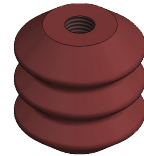
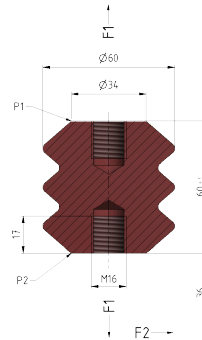


Support insulator with 2 inner threads M16, Ø = 60 mm

Item number 301274



Material and weight

Weight: 0.275 kg

Material: cycloaliphatic cast resin, brown

Loads

Perm. operating load/tension (F1): 7.5 kN

Min. failing load/tension (F1): 24 kN

Perm. operating load/bending (F2): 2 kN

Min. failing load/bending (F2):

Specification

Nominal voltage: max. 1.5 kV DC

Creepage distance P1-P2: 85 mm

Lightning impulse withstand voltage: 60 kV

Power-frequency withstand voltage, wet: 15 kV